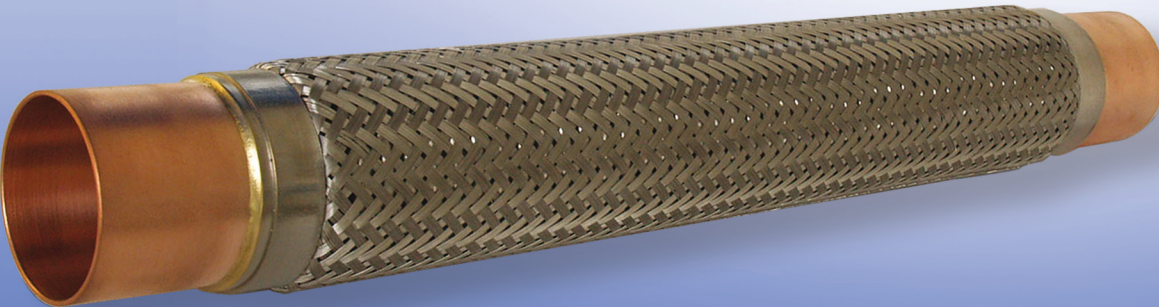
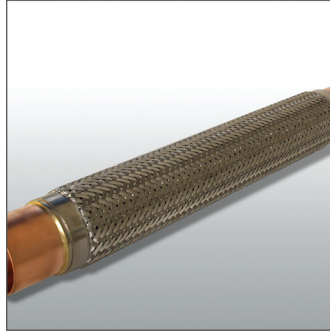


Technical Guide
Vibration Eliminators



Vibration Eliminators

TECHNICAL GUIDE
VIBRATION ELIMINATORS

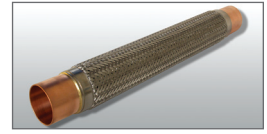


Thank you for choosing
our products



www.kielmannonline.com

Note: Technical information contained in this catalog may be changed or updated by the manufacturer without notice for the benefit of the excellence, service or presentation of the products. No liability is assumed for the use of this information.



VIBRATION ELIMINATORS

KIELMANN® vibration eliminators are devices used in suction and discharge lines of refrigeration and air conditioning systems. They are especially designed to

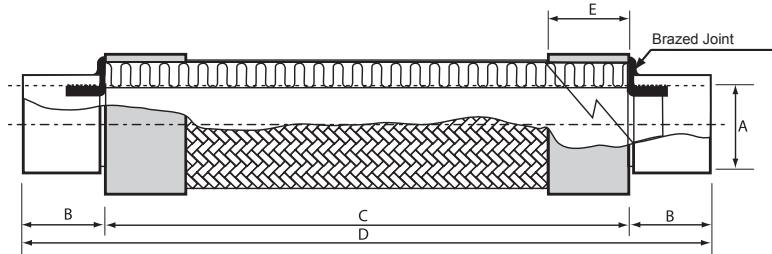
eliminate vibrations generated by motors, compressors and similar equipment that might damage tubes connected and welded joints.

CHARACTERISTICS

- Manufactured with corrugated steel pipe to increase their flexibility and vibration absorption
- Coated with braided steel wire for higher tensile strength
- Tested for pressure and vacuum, and individually packaged
- Both, the braided wire and the corrugated pipes, are reinforced with copper ferrules on each end, and welded to copper female terminals using high temperature alloy
- Connection type: ODF

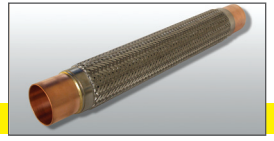
VIBRATION ELIMINATORS FOR PIPES: MODELS AND DIMENSIONS

Reference	A (I.D.)	B (±1/8")	C (±1/8")	D (±1/4")	E (±1/16")	Maximum Operating Pressure (MOP)	Burst Pressure (psig)
KVE-14	1/4"	3/4"	6.5/8"	8.1/16"	1/2"	500	2500
KVE-38	3/8"	13/16"	6.15/16"	8.9/16"++	1/2"	500	2500
KVE-12	1/2"	7/8"	7.1/4"	9"	1/2"	500	2500
KVE-58	5/8"	15/16"	8"	9.7/8"	11/16"	500	2500
KVE-34	3/4"	1.1/4"	8.1/16"	10.9/16"	11/16"	500	2500
KVE-78	7/8"	1.7/16"	9.1/8"	12"	13/16"	500	2500
KVE-118	1.1/8"	1.13/16"	9.7/16"	13.1/16"	13/16"	500	2500
KVE-138	1.3/8"	2"	11.1/2"	15.9/16"	7/8"	500	2500
KVE-158	1.5/8"	2.1/4"	12.3/8"	16.7/8"	15/16"	500	2500
KVE-218	2.1/8"	2.3/4"	15.3/16"	20.5/8"	15/16"	390	1950
KVE-258	2.5/8"	3.1/8"	18.1/16"	24.5/16"	1.1/4"	340	1700
KVE-318	3.1/8"	3.7/16"	20"	26.15/16"	1.1/2"	300	1500
KVE-358	3.5/8"	4.1/8"	24"	32.3/16"	1.9/16"	175	525
KVE-418	4.1/8"	4.7/16"	24"	32.15/16"	1.9/16"	175	525



NOMENCLATURE

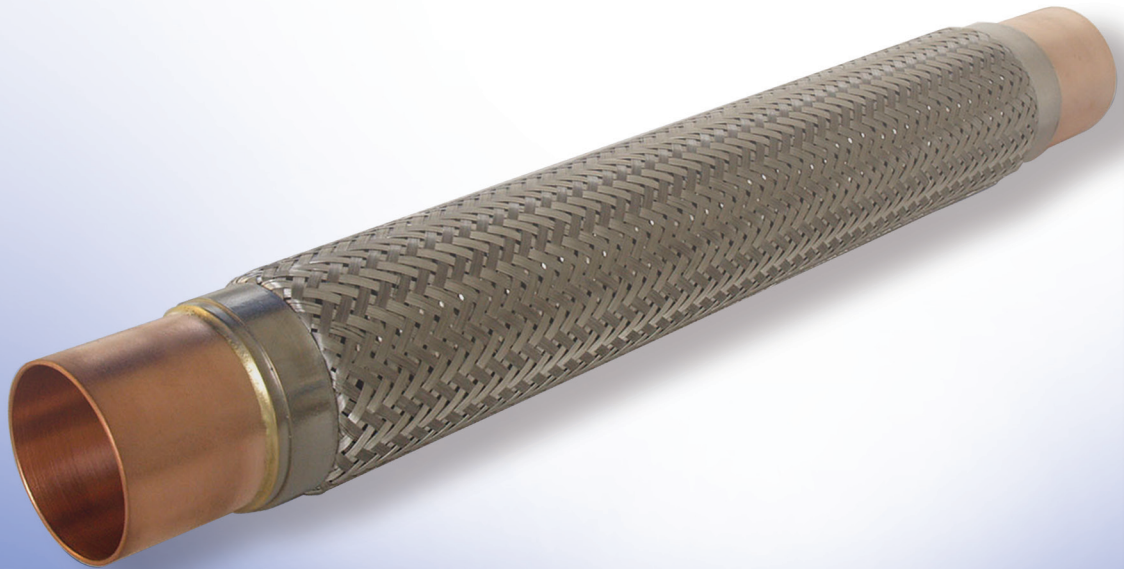
KVE-(XXX)
 (XXX) = Model = (two or three digits)
 (VE) = Product = (vibration eliminator)
 (K) = Manufacturer = KIELMANN®



VIBRATION ELIMINATORS

Notes:

TECHNICAL GUIDE



Thank you for choosing our products

KIELMANN®

www.kielmannonline.com